

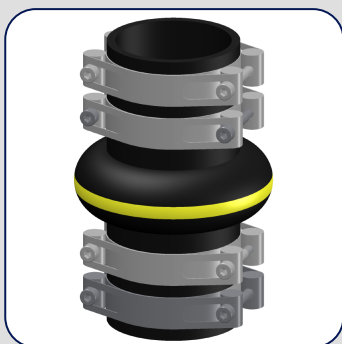


DOCUMENTATION SHEET

Rubber Bellows

Type 3K Yellow

3K YELLOW



General

Our rubber bellows are made from various elastomers and provide the flexible element in pipe work that is indispensable in today's technically advanced plant and machinery spaces.

By using the best quality proven rubber compounds and a construction based on many years of experience, our rubber bellows are produced to a high quality standard to guarantee maximum safety and performance.

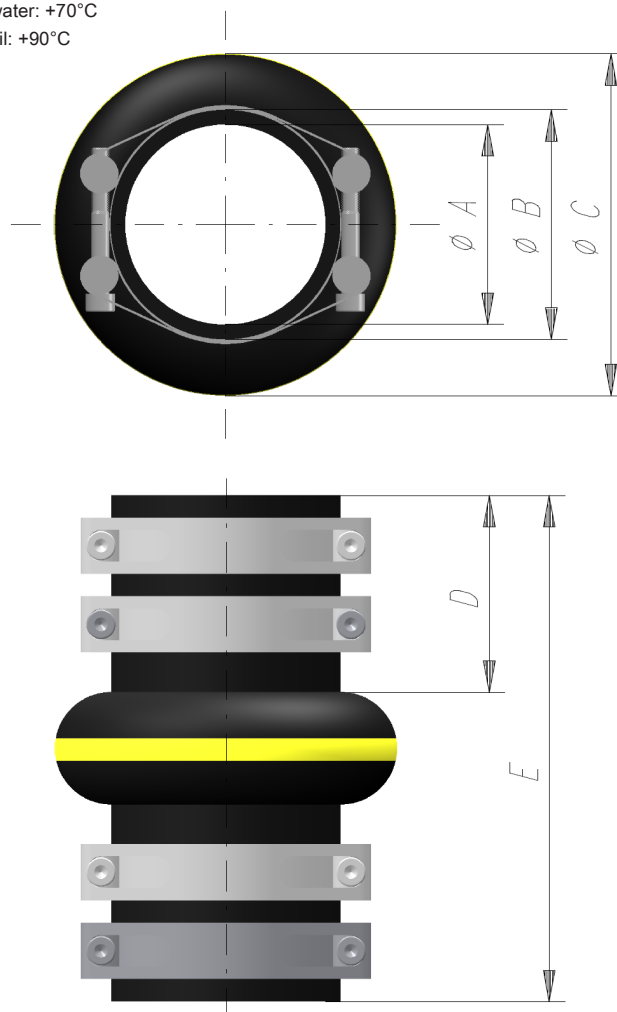
Rubber bellows are used in various fields of industry like shipbuilding, offshore, dredging, power plants, chemical industry, water works etc.

The rubber bellows provide:

- Compensation of thermal or mechanical movement of pipe work in axial, lateral and/or angular directions.
- Absorption and isolation of vibration combined with damping of pipe work borne sound transmission.
- Reduction of pressure pulses in pipe work.
- Compensation for pipe work misalignment on flexibly mounted installations.

Our program consists of rubber bellows with flanges, according all known standards as well as special connections, and rubber and silicone bellows for installation with hose clamps.

Maximum temperature water: +70°C
Maximum temperature oil: +90°C



DIMENSIONS



As an addition to the flanged bellow range our 3K and 3K2 rubber bellows have been designed especially to provide small, low weight bellows which are both very flexible and simple to install. The 3K ranges accommodate misalignment, axial and lateral pipe work movements and dramatically reduce the transmission of noise, vibration and shock.

High tensile strength texture cord plies combined with proven synthetic rubber mixes guarantee maximum reliability and an extended working life.

The burst pressure safety factor is 5 times the working pressure of 4 Bar. The minimum work pressure is 70 kPa (abs) and can be lowered by fitting a vacuum support ring. Average installed insulation is about 25 dB, a figure which is further improved by compressed installation.

3K YELLOW RING	Bellows dimensions					Allowable Displacement			Weight Min. Max.		Advised Hose clamp	
	ØA	ØB	C	D	E	Ax.	Lat.	Ang.	kg	kPa MPa		
	mm	mm	mm	mm	mm	mm	mm	°				
Art.nr without clamps												
KV025.0G1000	25,0	35	85	55	140	-15/+7	+/-10	7	0,2	70	0,4	40
KV032.0G1000	32,0	45	94	55	140	-15/+7	+/-11	7	0,3	70	0,4	45
KV033.7G1000	33,7	47	96	55	140	-15/+7	+/-12	7	0,3	70	0,4	45
KV038.0G1000	38,0	50	116	50	140	-15/+7	+/-12	7	0,3	70	0,4	45
KV042.4G1000	42,4	55	123	60	160	-19/+9	+/-14	7	0,4	70	0,4	55
KV044.5G1000	44,5	58	124	60	160	-19/+9	+/-14	7	0,4	70	0,4	55
KV048.3G1000	48,3	61	125	60	160	-19/+9	+/-14	7	0,4	70	0,4	60
KV054.0G1000	54,0	67	130	60	160	-19/+9	+/-14	7	0,5	70	0,4	65
KV057.0G1000	57,0	70	130	60	160	-19/+9	+/-14	7	0,5	70	0,4	65
KV060.3G1000	60,3	73	131	70	180	-19/+9	+/-14	7	0,6	70	0,4	70
KV063.5G1000	63,5	74	134	70	180	-19/+9	+/-14	7	0,6	70	0,4	70
KV076.1G1000	76,1	89	155	70	180	-19/+9	+/-14	7	0,8	70	0,4	85
KV088.9G1000	88,9	102	169	95	225	-20/+10	+/-15	7	0,9	70	0,4	95
KV108.0G1000	108,0	125	202	100	250	-25/+12	+/-16	7	1,6	70	0,4	115
KV114.3G1000	114,3	131	205	100	250	-25/+12	+/-16	7	1,7	70	0,4	125
KV115.8G1000	115,8	133	205	100	250	-25/+12	+/-16	7	1,7	70	0,4	125
KV139.7G1000	139,7	157	234	100	250	-25/+12	+/-16	7	2,0	70	0,4	150
KV168.3G1000	168,3	185	292	100	250	-30/+14	+/-21	7	2,6	70	0,4	170

TABLE

Pressure

The maximum working pressures are guaranteed by using the recommended power clamps in steel (galvanized) or stainless steel according to the table.



TYPE APPROVAL

3K YELLOW



Rubber Design B.V.

Industrieweg 21
2995BE Heerjansdam
The Netherlands
Phone: +31 (0) 78 677 87 78
Fax: +31 (0) 78 677 10 38
Email: info@rubberdesign.nl
Web: www.rubberdesign.nl